



RECP #: 752860

RECORDED 5/8/2019 AT 1:21 PM BK# 2620 PG# 1902  
Debra K. Lee, CLERK OF LARAMIE COUNTY, WY PAGE 1 OF 1

# STATE OF WYOMING CORNER RECORD

(In compliance with the CORNER PERPETUATION AND FILING ACT, Wyoming Statutes, 1997 Section 33-29-140, et. seq., and the Rules and Regulations of the Board of Registrations for Professional Engineers and Professional Land Surveyors)

## SOUTHEAST CORNER SECTION 36, T. 18 N., R. 63 W., 6TH P.M., LARAMIE COUNTY, WYOMING

GLO: SET A SANDSTONE 16X14X5, 11 IN. DEEP, WITH 6 MARKS ON EACH OF ITS FOUR FACES, SET TO THE CARDINAL POINTS AND RAISED A MOUND OF STONE AROUND IT FOR CORNER TO TOWNSHIPS 17 AND 18 NORTH, RANGES 63 AND 62 WEST.

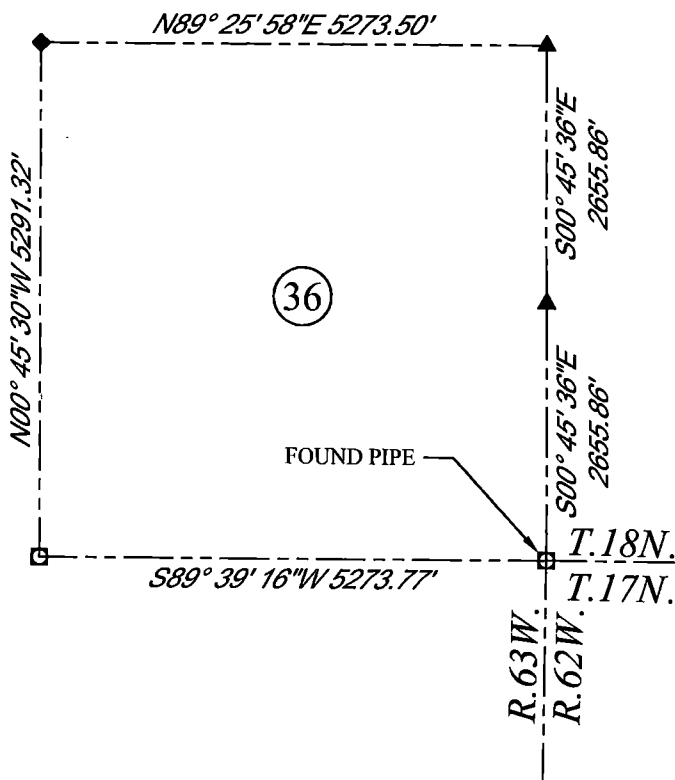
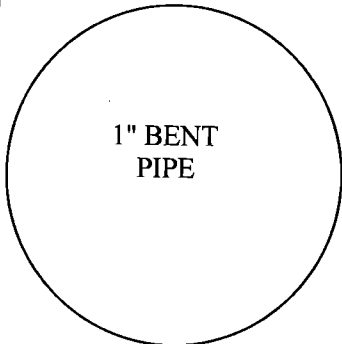
FOUND: A 1" BENT PIPE. THE PIPE IS 10' NORTH OF A SOUTH FENCE LINE, AND IN LINE WITH A EAST AND WEST FENCE LINE.



SCALE: NONE  
NORTH DETERMINED BY  
G.P.S OBSERVATIONS

FOUND: 1" BENT PIPE

SET: NOTHING



### LEGEND:

- FOUND BLM CAP
- FOUND USFS CAP
- FOUND STONE
- FOUND PRIVATE MONUMENT
- ▲ CALCULATED POSITION
- ▲ SET MONUMENT (LS10245)
- SECTION LINE

DATE OF FIELD WORK: 8/9/2018 OFFICE REFERENCE: MERIDEN

### CROSS INDEX DIAGRAM

	1	2	3	4	5	6	7	8	9	10	11	12	13	14	15	16	17	18	19	20	21	22	23	24	25
A																									
B																									
C		6																							
D			5																						
E				4																					
F					3																				
G						2																			
H							1																		
I																									
J																									
K																									
L																									
M																									
N																									
O																									
P																									
Q																									
R																									
S																									
T																									
U																									
V																									
W																									
X																									
Y																									
Z																									

WOOD  
2615 AVIATION DRIVE  
SHERIDAN, WY 82801  
PH: 307-675-6400



THIS CORNER RECORD WAS  
PREPARED BY ME OR UNDER  
MY DIRECTION AND  
SUPERVISION,  
SEAL AND SIGNATURE

